

## DEVELOPMENT METHOD OF PROTECTING IMAGES WITH AMPLITUDE-MODULATED SCREENING USING ATEB-FUNCTIONS

ã Nazarkevych M., 2015

**Proposed method of protection can be used for protection of printed documents and it is not expensive. The theory of Ateb-functions, which is && of classic trigonometry, was used as a mathematical apparatus to develop method of rasterization. A rasterization with amplitude-modulated method for offset printing is developed.**

**Key words: rasterization, Ateb-functions, protection of printed documents, amplitude modulation.**

### 1. Introduction

Today new systems for protection of information in electronic form is developed. However, the necessity to develop technologies for the protection of printed documents is no less relevant, since printing technologies of reproduction are constantly being improved and the new ones are developed.

There are two methods of shades of color reproduction in printing: – changing the thickness of the paint layer, or changing areas of painted and unpainted areas on the print. The first method is used in deep print by changing the size of the printing elements. The most common today is the offset printing. With the implementation of this printing method ink thickness is always constant, since a change in the thickness of the paint is technologically impossible, and the printing is based on the properties of paint adhesion-cohesion ink to printing elements and whitespace. Therefore, in the offset printing method the amplitude modulated rasterization is used. Rasterization is a process of parting an image into massive of points.

### 2. Basics of rasterization of printed pictures

The order of points in the picture or raster elements is called raster. This type of rasterization is used to implement amplitude-modulated method [11]. For monochrome image raster elements can take two values – "0" or "1".

The fig.1 shows a raster cell, which element is a square. This type of raster is called rectangular raster. The most common is a round raster fig. 1, b.

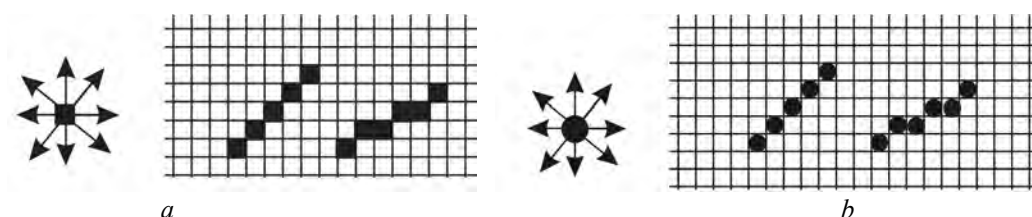


Fig. 1. Rasterization with a – rectangular raster cell, b – round raster cell

All figures should be the same and they should fill all space without gaps during the process of rasterization.

As it is shown in Fig. 1, a round black raster point (completely filled) forms a gap, when an angle of 45° is printed, which at first glance seem subtle. When mode with 256 shades of gray is played, these distortions are more visible. Raster points destroys contours and fine details of the original gray-scale, reducing the quality of prints [5].

If raster point is of square form, it touches the neighbor four sides (see. Fig. 1), and this point creates a great unevenness in the image. Round point has the same drawback. Structure, which is based on superellipse is dependent on the direction of image details. As a result, you can achieve quality improvements.

### 3. Modelling of area of the raster elements

Modelling square raster cell with curve Lamé

The equation of generalised superellipse is in [10]. Finding the value of variable  $y$  we can write

$$y = b \cdot \sqrt[q]{1 - \left(\frac{x}{a}\right)^p}.$$

If we take into account famous Newton-Leibniz formula [1], we will calculate area of generalized superellipse

$$s = \int_0^a b \cdot \sqrt[q]{1 - \left(\frac{x}{a}\right)^p} dx, \quad (1)$$

To simplify the expression, we assume  $p = q = n, n > 0$ , then

$$s = \int_0^a b \cdot \sqrt[n]{1 - \left(\frac{x}{a}\right)^n} dx. \quad (2)$$

If we take into account parametric equations it immediately follows that

$$\begin{cases} x = a \sin^{\frac{2}{n}}\varphi \\ y = b \cos^{\frac{2}{n}}\varphi \end{cases} \quad (3)$$

where  $0 < x < a$ , a  $0 < \varphi \leq \frac{\pi(n,n)}{2}$ .

Differentiating first expression in (3), we obtain

$$dx = \frac{2a}{n} \sin^{\frac{2}{n}-1}\varphi \cdot \cos\varphi d\varphi \quad (4)$$

Substituting this into (3), (4) y (2), we get

$$\begin{aligned} s &= \int_0^a y dx = \int_0^{\frac{\pi}{2}} b \cos^{\frac{2}{n}}\varphi \cdot \frac{2a}{n} \sin^{\frac{2}{n}-1}\varphi \cos\varphi d\varphi = \\ &= \frac{2ab}{n} \int_0^{\frac{\pi}{2}} \sin^{\frac{2}{n}-1}\varphi \cdot \cos^{\frac{2}{n}+1}\varphi d\varphi \end{aligned}$$

As we know from [3]

$$\int_0^{\frac{\pi}{2}} \sin\varphi^\alpha \cdot \cos\varphi^\beta d\varphi = \frac{1}{2} B\left(\frac{\alpha+1}{2}, \frac{\beta+1}{2}\right),$$

де  $\alpha, \beta > -1$ .

Hence

$$\begin{aligned} \int_0^{\frac{\pi}{2}} \sin^{\frac{2}{n}-1}\varphi \cdot \cos^{\frac{2}{n}+1}\varphi d\varphi &= \frac{1}{2} B\left(\frac{\frac{2}{n}-1+1}{2}, \frac{\frac{2}{n}+1+1}{2}\right) = \\ &= \frac{1}{2} B\left(\frac{1}{n}, \frac{1}{n} + 1\right) = \frac{\Gamma\left(\frac{1}{n}\right)\Gamma\left(\frac{1}{n}+1\right)}{2\Gamma\left(\frac{1}{n}+\frac{1}{n}+1\right)} = \frac{n \left\{\Gamma\left(\frac{1}{n}+1\right)\right\}^2}{2 \Gamma\left(\frac{2}{n}+1\right)} \end{aligned} \quad (5)$$

Thus, area of superellipse is equal to

$$s = \frac{ab}{n} B\left(\frac{1}{n}, \frac{1}{n} + 1\right) = \frac{ab \left\{\Gamma\left(\frac{1}{n}+1\right)\right\}^2}{n \Gamma\left(\frac{2}{n}+1\right)}. \quad (6)$$

Let's find the area of generalised superellipse. Analogically using parametric equation, we obtain

$$\begin{cases} x = a \sin^{\frac{2}{n}} \varphi \\ y = b \cos^{\frac{2}{m}} \varphi \end{cases}$$

where  $0 < x < a$ ,  $0 < \varphi \leq \frac{\pi}{2}$ .

It immediately follows

$$\begin{aligned} s = \int_0^a y dx &= \int_0^{\frac{\pi}{2}} b \cos^{\frac{2}{m}} \varphi \cdot \frac{2a}{n} \sin^{\frac{2}{n}-1} \varphi \cos \varphi d\varphi = \frac{ab}{n} B\left(\frac{1}{n}, \frac{1}{m} + 1\right) = \\ &= \frac{ab}{n} \frac{\Gamma\left(\frac{1}{n}\right)\Gamma\left(\frac{1}{m}+1\right)}{\Gamma\left(\frac{1}{n}+\frac{1}{m}+1\right)} \end{aligned} \quad (7)$$

Finding the length of raster cells based on generalized superellipse and Lamé curve.

The length of curve  $f(x)$  is calculated as

$$l = \int_0^{x_0} \sqrt{1 + (f'(x))^2} dx, \quad (8)$$

where  $f'(x)$  is a derivative of function  $f(x)$ .

Let's calculate the length of generalized superellipse

$$l = \int_0^a \sqrt{1 + \left(\frac{bp}{xq}\right)^2 \left(\frac{x}{a}\right)^{2p} \left\{1 - \left(\frac{x}{a}\right)^p\right\}^{\frac{2}{q}-2}} dx \quad (9)$$

The length of Lamé, when  $p = q = n$ , is equal to

$$l = \int_0^a \sqrt{1 + \left(\frac{b}{x}\right)^2 \left(\frac{x}{a}\right)^{2n} \left\{1 - \left(\frac{x}{a}\right)^n\right\}^{\frac{2}{n}-2}} dx \quad (10)$$

Finding the area of superellipse based on Ateb-functions

Let's find the area of curve  $\left(\frac{x}{a}\right)^n + \left(\frac{y}{b}\right)^m = 1$ , using parametric equation with Ateb-functions

$$\begin{cases} x = a \cdot ca(m, n, \omega) \\ y = b \cdot sa(n, m, \omega) \end{cases}$$

For reasons of symmetry let's define an area of each quarter of superellipse

$$\frac{s}{4} = \int_0^{\frac{\pi}{2}} y dx.$$

Derivative of formula (9) is calculated as

$$dx = a \cdot \frac{2}{m+1} sa(n, m, \omega)^n d\omega \quad (11)$$

Hence

$$\frac{s}{4} = a \cdot b \cdot \frac{2}{m+1} \cdot \int_0^{\frac{\pi}{2}} sa(n, m, \omega)^{n+1} \cdot d\omega \quad (12)$$

Applying the formula (9), proved in [4]

$$\int_0^{\frac{\pi}{2}} sa(n, m, \omega)^s \cdot ca(m, n, \omega)^l d\omega = \frac{1}{2} B\left(\frac{s+1}{n+1}, \frac{l+1}{m+1}\right)$$

where  $s, l$  – are values, which can be described as  $\frac{p}{q}$  ( $p \in Z, q = 2q_1 + 1, q_1 \in N$ ). If  $l = 0$ , and  $s = n + 1$ , then

$$\int_0^{\frac{\pi}{2}} sa(n, m, \omega)^{n+1} d\omega = \frac{1}{2} B\left(\frac{n+2}{n+1}, \frac{1}{m+1}\right) = \frac{1}{2} \frac{\Gamma\left(\frac{n+2}{n+1}\right)\Gamma\left(\frac{1}{m+1}\right)}{\Gamma\left(\frac{n+2}{n+1} + \frac{1}{m+1}\right)}.$$

Considering the properties of Gamma – functions [3, 6] and formulas of period of ateb-functions(7) we get

$$\int_0^{\frac{\pi}{2}} sa(n, m, \omega)^{n+1} d\omega = \frac{1}{2} \cdot \frac{m+1}{n+m+2} \cdot \Pi(m, n). \quad (13)$$

Substituting in (3.13) formula (3.12) we obtain

$$S = 4 \cdot a \cdot b \cdot \frac{2}{m+1} \cdot \frac{1}{2} \cdot \Pi(m, n) \frac{m+1}{n+m+2} = \frac{4 \cdot a \cdot b}{n+m+2} \cdot \Pi(m, n). \quad (14)$$

If  $m = n$  we get formula (6).

### Construction of raster elements

A new method of rasterization gives a chance to reproduce thin image elements more accurately which is important for protection. Forming a special structure of raster points better adapt to display halftones in the image.

Forming raster point  $T(i, j)$  can be done with formula

$$T(i, j) = \left| \frac{ca(n, n, \omega)}{A(i, j)} \right|^{n+1} + \left| \frac{sa(n, n, \omega)}{A(i, j)} \right|^{n+1} \quad (15)$$

where  $i, j$  – current raster point coordinates,  $n$ - parameter of periodic  $ca(n, n, \omega)$  та  $sa(n, n, \omega)$  та по горизонталі та вертикалі. Area of raster elements is calculated with formulas (6), (7) та (14).

Thus, we get formulas to evaluate area of raster elements, which allowed to simulate values of raster cells. New forms of raster points can be measured with variable devices, including microscope spectrophotometer. A new form of raster points required for visual and laboratory control while protecting images.

#### 4. Modelling of rasterization process based on Ateb functions

It is suggested to rasterize with Ateb functions. In table 1 it is calculated percentage value of filling of raster cell. To change the area of raster elements we vary  $a, b$  and  $n$ . Since the rasterization is amplitude-modulated, raster cells area have equal areas, so let's apply  $a = b = 1$ . and periodic Ateb functions, which have  $m = n$ . We will calculate the length with formula (10), and area with formula (14).

Table 1

**The calculation of Ateb-functions parameters for raster cell formation**

Parametrs		Length	Area	Size
a, b – raster cell size	n	P, mm	S, mm <sup>2</sup>	%
1	0.41	3,43	0,1	10
1	0.54	3.18	0,2	20
1	0.68	2.99	0,3	30
1	0.82	2.87	0,4	40
1	1.00	2.83	0.5	50
1	1.24	2.88	0.6	60
1	1.57	3.00	0.7	70
1	2.13	3.18	0.8	80
1	3.3	3.42	0.9	90
1	10	3.79	0,97	100

Let consider an item on the prints, which are raster elements. The best elements to display with are symmetrical, so let's apply periodic Ateb- functions. Block diagram of the implementation of the method is below. Digital image, which can be rasterized is loaded transformed in Grayscale mode. Then, the

amplitude-modulated rasterization is happened with the developed method. Digital image is stored in PDF-format, which is implemented with high printing quality.

If the form of raster point is changed we can achieve the effect that the gap between raster cells are smaller and thus raster distortion will be less noticeable.

Let's form headset of raster elements based on Ateb-functions. Headset is formed as a font in FontLab Studio, which is shown in Fig. 2. One element of this headset is shown in Fig. 3

It is generated appropriate forms of raster elements, that are presented in Table 2

Table 2

**The size and shape of raster cells based on Ateb- functions depending on the size of raster points**

size and shape of raster cells rasterization is amplitude-modulated										
Size of raster cells	10 %	20 %	30 %	40 %	50 %	60 %	70 %	80 %	90 %	100 %
Normal rasterization										
Rasterization based on Ateb- functions										

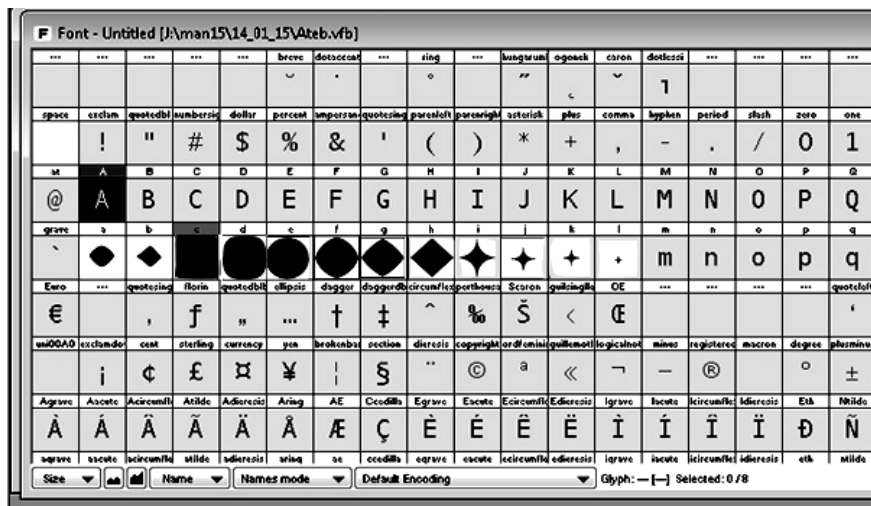


Fig. 2. Formed as a font Ateb.otf

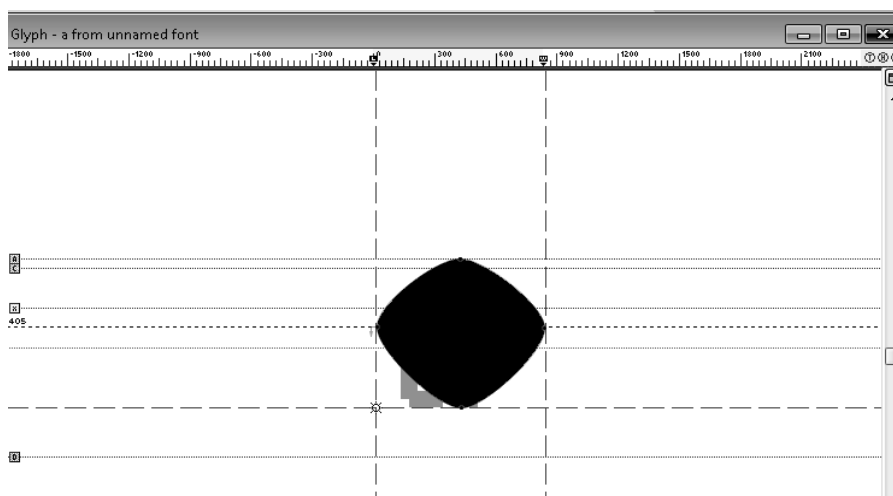


Fig. 3. Formation raster points size of raster dots 60 %

Fig. 4 shows the algorithm of the method of rasterization. Let's load a bitmap, which can be rasterized, and determine the width  $L, i \in (1, \dots, L-1)$  and height  $N, j \in (1, \dots, N-1)$ . Transforming this image in raw format, we will avoid the loss of information. We will load headset, as a type with extension Ateb.otf. Let's develop function changing the baseline font that will be the basis for the derivation of raster cells. Then we will evaluate the canvas size, which will display raster cells. Afterwards, the values of the new canvas are calculated, basing on read information about  $i$ -th row of pixels, and the values are converted into equivalent areas of Ateb- functions

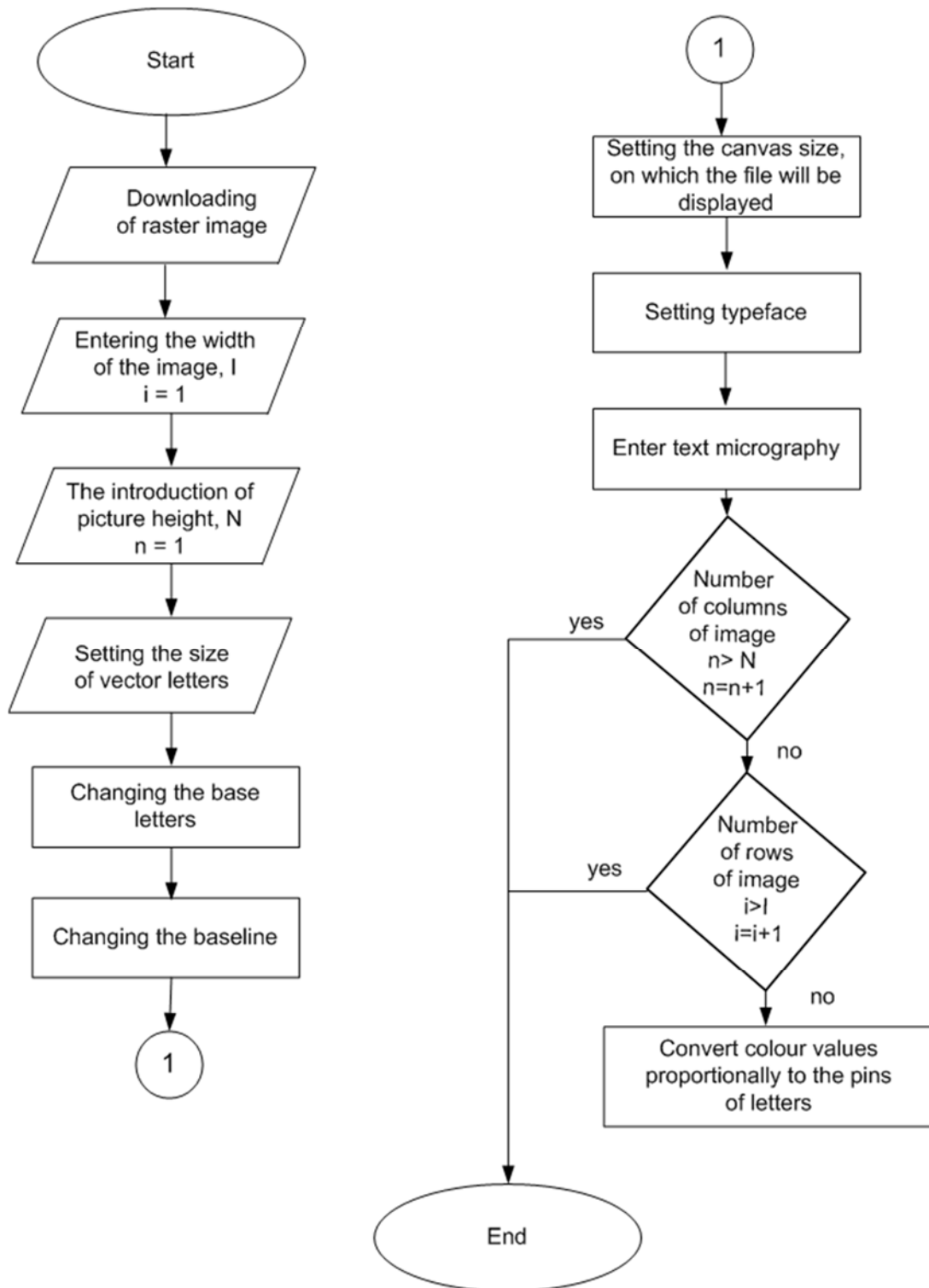
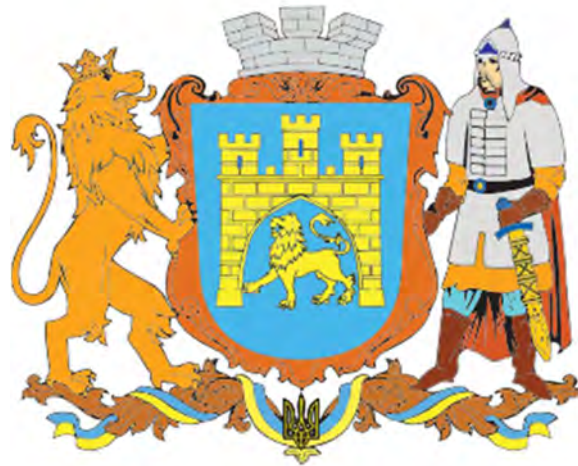
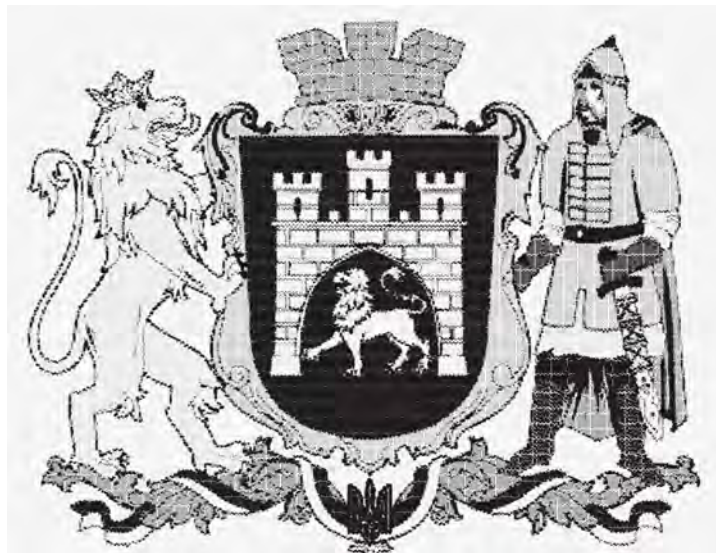


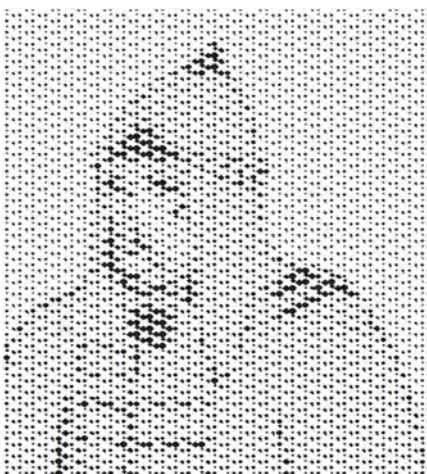
Fig. 4. Algorithm of rasterization based on Ateb-functions



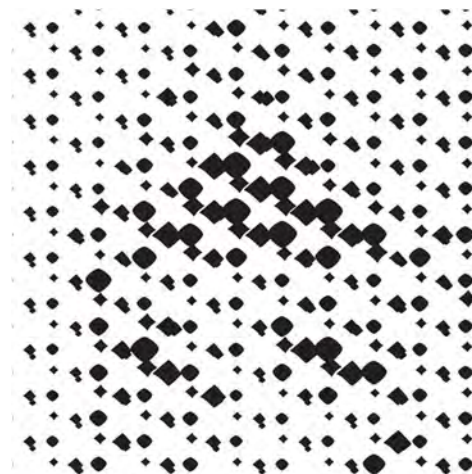
*Fig. 5. Entire image, which will be rasterized*



*Fig. 6. Rasterized image*



*Fig. 7. Enlarged fragment of rasterized image  
in scale 200%*



*Fig. 8. Enlarged fragment of rasterized image  
in scale 1000%*

Once the entire line is read and written, the transition to the adjacent column  $j \in (1, \dots, N-1)$  of picture is happened.

File with source code is written in the post-script format. It is converted to pdf-format with Acrobat distiller. It is known that pdf-format was developed for printing.

Figure 5 shows the original file with emblem of the city. Fig. 6 shows rasterized with developed method emblem of the city, and Fig. 7 shows enlarged rasterized image. Constructing the rasterized elements in more gradations we can get clearer and better image.

### 5. The method of protection – an attempt of falsification rasterized image

The goal of this protection is to make copying of printed picture more expensive. Fig. 9 shows photographed picture, which was protected with the method of amplitude modulation, based on Ateb-functions. As we see from fig. 9, there aren't any rasterized points. Moreover, we see the massive of points, which are merged and make background picture. This happens, because rasterization is made with methods of vector graphic, this makes picture better.

Rasterized with this method picture can not be copied, because has other form of raster point. This method of rasterization makes picture of higher quality, because new form of raster element gives the chance to avoid loss of clearness on the edge of raster cell. The advantage of this method is clearness of every raster cell, because rasterization is in vector format and is stored in pdf file, that is adapted for printing and multiplying. In future we plan to make rasterization of colourful picture.

Modelling forms of raster points, we can expand the number of gradations and therefore we get better picture quality.

Simulating forms of halftone dots, expanding the number of gradations and therefore get better picture quality. This method realizes ten forms of raster points. Increasing the number of raster points, we get greater amount of gradations, so we improve quality.

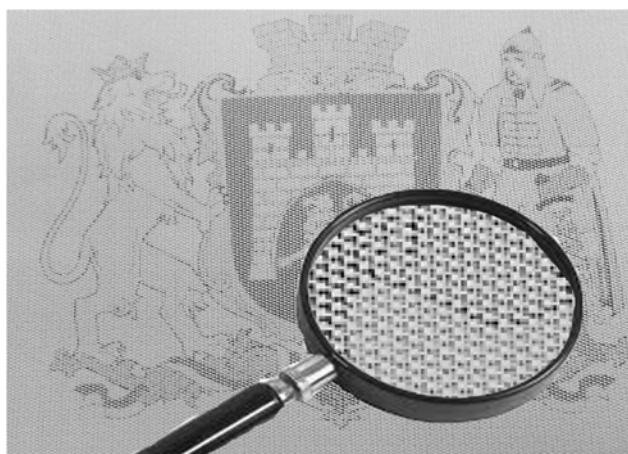


Fig. 9. Scanned image and its enlarged fragment

### Summary

To protect printed images we need to develop new methods of rasterization. It was suggested to implement graphic construction of Ateb-function for rasterization problem. It was searched properties of figures, based on Ateb-functions. It was searched properties of cylinder, whose cross section is superellipse. It was calculated an area of superellipse, based on Ateb-functions. It was constructed a raster element. The picture was rasterized, using properties of Ateb-functions. Picture, which is rasterized with this method, is protected from copying. This method of rasterization makes picture of higher quality, because new form of raster element gives the chance to avoid loss of clearness on the edge of raster cell. Rasterization is in vector format. The file is stored in pdf file, that is adapted for printing the image.

**Publication sare based on the research provided by the grant support of the State Fund For Fundamental Research (project № Ф62/75 – 2015).**

1. Abramowitz, M. and Stegun, I.A.: *Handbook of Mathematical Functions*, Dover Publications, New York, 1964. 2. Apostol T. M. Mnatsakanian M. A. *Isoperimetric and isoparametric problems*, Amer.



*Math. Monthly* 111 (2004) 118–136. 3. Бронштейн И. Н., Семедяев К. А. *Справочник по математике для инженеров и учащихся втузов*. – М.: Наука, 1981. – 523 с. 4. Дрогомирецька Х. Т. Про інтегрування спеціальних Атеб-функцій // *Вісник Львівського університету. Серія механіко-математична*. – 1997. – Вип. 46. – С. 108–110. 5. Дронюк І. Розроблення бітових карт методом амплітудно-модульованого растрівання / І. Дронюк, О. Городецька // *Вісн. Нац. ун-ту “Львівська політехніка”*. – 2011. – № 719. – С. 88–94. 6. Корн Г. А., Корн Т. М. *Справочник по математике для научных работников и инженеров*. – М.: Наука, 1974. 7. Самойленко А. М. *Свойства периодических Атеб-функций и их применение при построении решений нелинейных дифференциальных уравнений второго порядка* / А. М. Самойленко, А. М. Возний. – К.: Институт математики АН УССР, 1984. – 51 с. – (Препринт / НАН України, Ін-т математики ; 84.20). 8. Сенік П. М. *Обернення неповної Beta-функції*. // *УМЖ*. 1969. 21.– № 3. – С. 325–333. 9. Сенік П. М. *Про Атеб-функції* // *ДАН УРСР. Сер. А*. – 1968. – № 1. – С. 23–26. 9. Sokolov D. D. (2001), “Late curve”, in Hazewinkel, Michiel, *Encyclopedia of Mathematics*, Springer. 10. Куппхан Г. *Энциклопедия по печатным средствам информации. Технологии и способы производства; пер. с нем.* – М.: МГУП, 2003. – 1280 с.

УДК 519.8; 004.94

А. Штимак

ДВНЗ “Ужгородський національний університет”,  
кафедра системного аналізу і теорії оптимізації

## ТЕХНОЛОГІЯ ВИЗНАЧЕННЯ РІВНЯ КОМПЕТЕНТНОСТІ ВИПУСКНИКА ВНЗ З ВИКОРИСТАННЯМ АЛГОРИТМІВ НЕЧІТКОГО ЛОГІЧНОГО ВИВЕДЕННЯ

© Штимак А., 2015

Запропоновано технологію для визначення рівня компетентності випускника вузу з використанням теорії нечітких множин та алгоритмів нечіткого логічного виведення. Особливістю технології є формування нечіткої бази знань про успішність випускника ВНЗ протягом навчання та використання алгоритмів нечіткого логічного виведення із зваженою істинністю. Розроблена технологія надає можливість кількісного оцінювання рівня компетентності не тільки окремого випускника вузу, але й усього контингенту випускників, тобто можливість проведення системних досліджень з проблем оцінювання компетентності у вузі.

**Ключові слова:** технологія, компетенція, компетентність, рівень компетентності, нечітке логічне виведення.

The technology to determine the competence of graduate using the theory of fuzzy sets and fuzzy logic inference algorithms was proposed. The peculiarity of technology is forming fuzzy knowledge base of success for graduate studies and algorithms using fuzzy inference validity weighted. The technology allows to quantify the level of competence not only of individual graduate, but the whole contingent of graduates, i.e. the possibility of systematic research on assessment competence in high school.

**Key words:** technology, competence, competency, competence level, fuzzy logic output.

### Постановка проблеми

В умовах інтеграції національної системи вищої освіти до європейського освітнього середовища та сучасних суспільних трансформацій висуваються нові вимоги до майбутніх фахівців у контексті демонстрації ними високого рівня професійної компетентності, готовності до забезпечення європейської якості освіти. Компетентнісно-орієнтована освіта означила нові вимоги